

9th and 10th round of Czech MTBO Cup

Bulletin 1

Date: 23. 6. 2018 – 9th Czech Cup MTBO – middle
24. 6. 2018 – 10th Czech Cup MTBO - long

Organizer: Slavia Liberec Orienteering on behalf of the Czech Orienteering Federation

Classes and winning times:

WM11, W14, W17, W20, W21E, W21A, W21B, W40, W50, M14, M17, M20, M21E, M21A, M21B, M21C, M40, M50, M60, OPEN

For all classes, the winning times will be according to Czech cup rules.

Event centre:

Event Center: Hamr na Jezeře, autocamp, Loc. 50.7043981N, 14.8456508E

Mapa: MTBO maps, ISMTBOM 2010, survey Jun 2018

middle – 1:15000, e 5m, map size A3

long – 1:15000, e 5m, map size A3

Maps will not be printed on waterproof paper

Terrain description: Moderate hilly with a high-density network of tracks and paths. Some paths have sand ground and may be physically and technically challenging.

Entries, Entry fee: Until 18.6.2018 via ORIS (oris.orientacnisporty.cz),

In case that you are not able to enter via Oris, you can register by email to: j.putik@gmail.com. Email entry has to be confirmed by the organizer. An entry should contain the name, class and SI card number for each competitor.

Fee

	WM11, W/M14	W/M17, W/M20	W/M21, W/M40+	Open
Middle	60 CZK	150 CZK	200 CZK	100 CZK
Long	60 CZK	150 CZK	200 CZK	100 CZK

Payment - by cash on registration at the event office.

Accommodation: Order together with entry via ORIS.

Tent / small car - 100 CZK / night

Person in the tent or camper - 60 CZK / night

Camper, Motorhome - 150 CZK / night

Electricity for camper - 100 CZK / night

Event office opening hours

Registration: 23.6. 11:00 – 13:00, at the event center (EC)
24.6. 8:00 – 9:00, at the EC

Parking: Car parking is possible at the event center. Parking fee is 50 CZK for both days.

Distance:

Saturday:	EC – Start	3,5 km
	Finish – EC	1,5 km
Sunday:	EC – Start	1,6 km
	Finish - EC	3 km

SI card read out at the EC for both days.

Start: Interval start for both days
Saturday 00 = 14:00 – middle
Sunday 00 = 10:00 – long

Prize giving ceremony: Sat – at the EC from 20:00.
Sun – at the EC approx from 14:00

Equipment check: Equipment check will be performed at start for classes MW11, M/W 14, M/W 17 and all OPEN only.

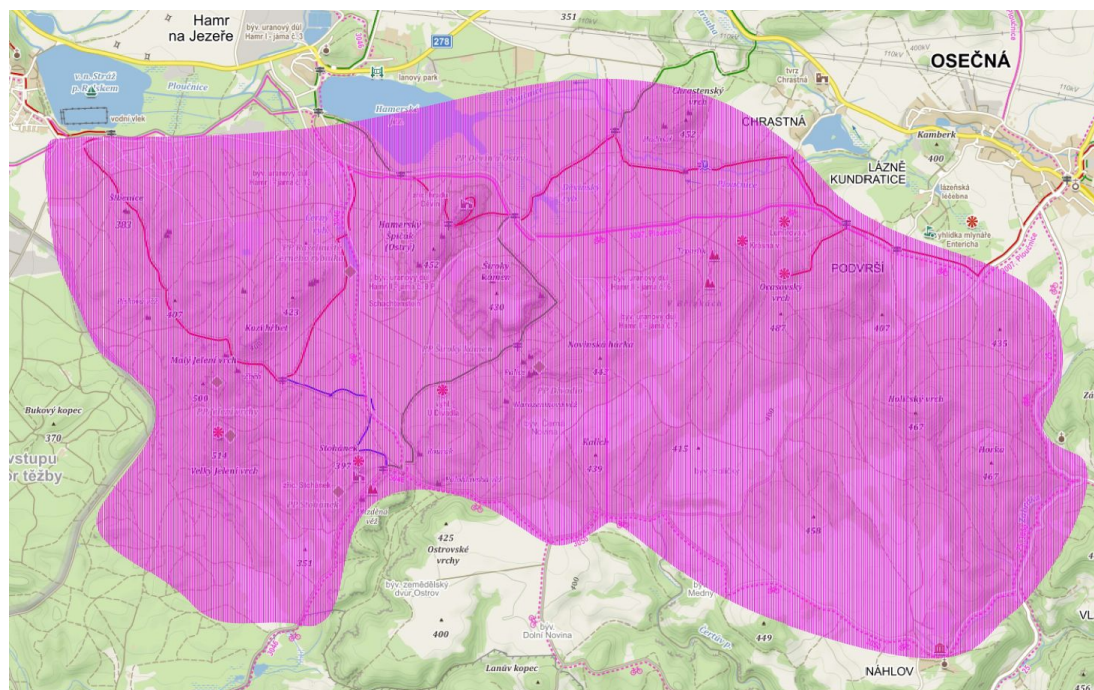
Wearing a cycling helmet is mandatory for all the stages. The bikes of all competitors must have the tires with minimal width of 1.5”.

Special rule: **Competitors must stay on the tracks only during the whole race. Due to the special demands of local authorities ridding and running of the track is strictly forbidden. Competitors who will break this rule will be disqualified.**

Punching system: Sportident electronic punching system. Control points will not be set into air+ mode.

Complains: The time limit for complaints is 1 hour after official race finish. Complaints received after this time limit will only be considered if there are valid exceptional circumstances which must be explained in the complaint. Any complaint shall be made in writing to the organizer – contact the staff at the finish.

Forbidden areas:



Organizers:

Event director: Jiří Putík

National controller: Milan Meier

Course setters: Jiří Vraný, Elis Masopustová

Information:

ORIS, facebook, <http://www.vlio.cz>